



Links Drive, Totteridge, N20 8QU
Asking Price £1,695,000 Freehold

Council Tax Band G

REAL ESTATES
Est.1981

Estate Agents · Residential Sales · Investments · Lettings

Real Estates are delighted to offer for sale this substantial 5 bedroom, 4 bathroom semi-detached family residence measuring in excess of 3000 sq ft, situated in a popular cul-de-sac opposite South Herts Golf Club and within walking distance to local amenities and Totteridge & Whetstone Northern Line tube station.

Arranged over 3 floors, the property comprises spacious, well planned accommodation with the benefit of underfloor heating to the kitchen and bathrooms. Further benefits include 2 balconies to the rear bedrooms on the 1st floor, 11 solar panels and battery storage, electric car charger, internal networking and Hive heating system.

Externally there is approx 80' ft rear garden with patio off the kitchen, and an external storage area, shed and play area to the rear. To the front there is a large driveway providing off street parking for a number of cars.

Early viewing is highly recommended via the sellers sole agent.



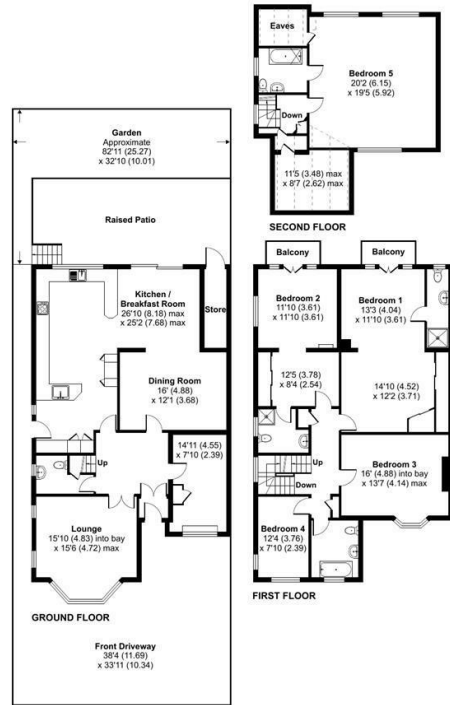


Links Drive, London, N20

Approximate Area = 3034 sq ft / 281.8 sq m
 Limited Use Area(s) = 158 sq ft / 14.7 sq m
 Outbuilding = 43 sq ft / 4 sq m
 Total = 3235 sq ft / 300.5 sq m
 For identification only - Not to scale



Denotes restricted head height



Certified Property Measurer
 Floor plan produced in accordance with RICS Property Measurement Standards incorporating International Property Measurement Standards (IPMS2 Residential). © rinchcom 2024. Produced for Real Estates - REF: 1141888

Energy Efficiency Rating		Current	Potential
Very energy efficient - lower running costs	A		
Energy efficient - lower running costs	B		
Decent energy efficiency - lower running costs	C	75	81
Some energy efficiency - lower running costs	D		
Low energy efficiency - higher running costs	E		
Very low energy efficiency - higher running costs	F		
Least energy efficient - higher running costs	G		

EU Directive

